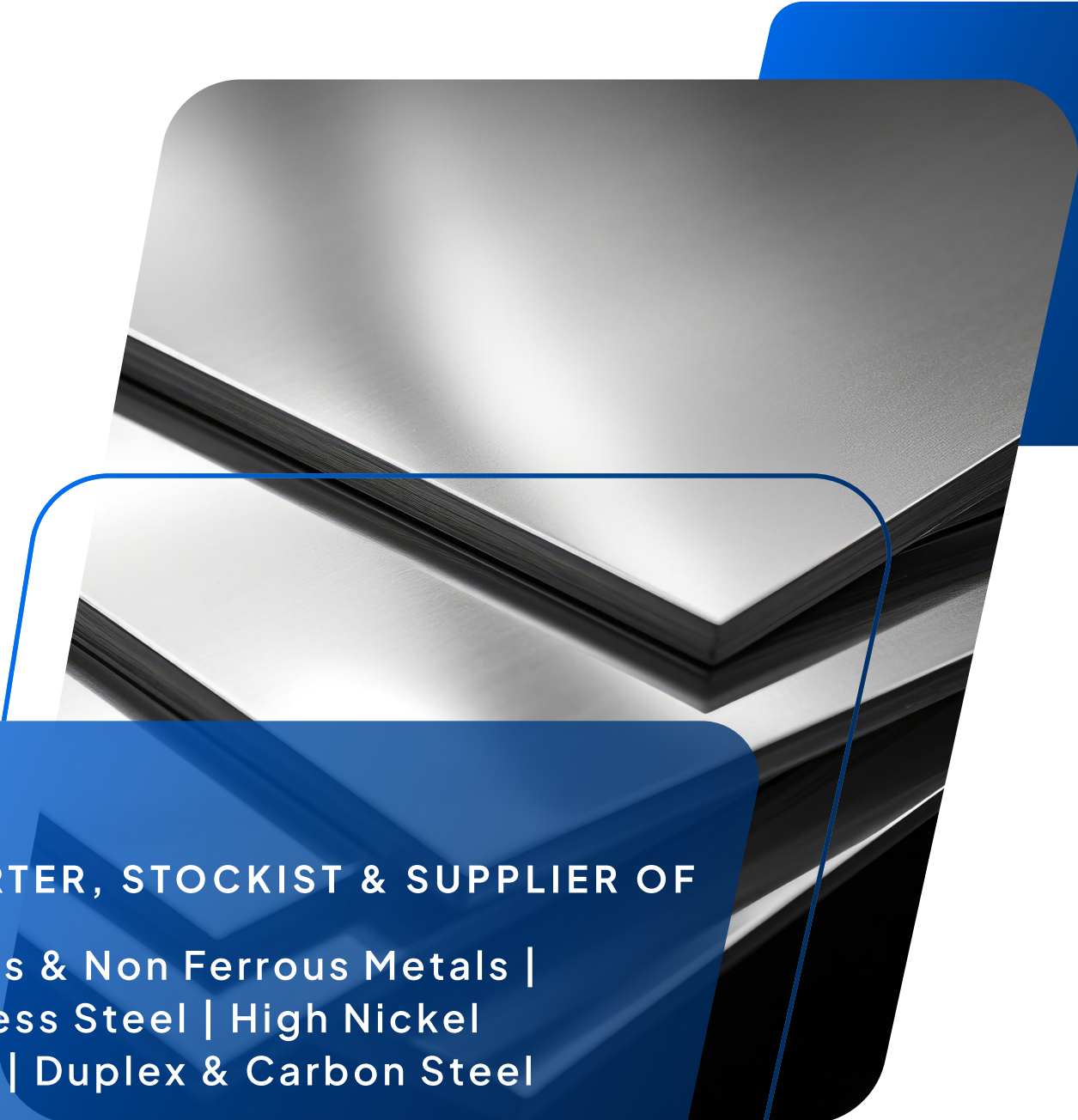




**Regnum Precision  
Private Limited**



**IMPORTER, STOCKIST & SUPPLIER OF**

**Ferrous & Non Ferrous Metals |  
Stainless Steel | High Nickel  
Alloys | Duplex & Carbon Steel**

ISO 9001:2015 certified company

[www.regnumprecision.com](http://www.regnumprecision.com)



---

## About us

With a global footprint and extensive network, Regnum Precision Private Limited sources high-quality stainless steel products from leading mills and suppliers around the world. Our diverse inventory includes a wide range of grades, finishes, and specifications, ensuring that our customers have access to the materials they need, when they need them. Whether you're looking for a specific product or a comprehensive package, our one-stop solution streamlines your procurement process, saving you time, resources, and effort. From Europe to Asia, and from the Americas to the Middle East, we've got you covered – all under one roof.

# Vision



Our vision at Regnum Precision Pvt Ltd is to create a brighter future for all. We are dedicated to developing groundbreaking products and services that transform industries, enrich lives, and inspire new possibilities. With passion, creativity, and a relentless pursuit of excellence, we aim to set new standards, build lasting relationships, and make a lasting difference in the world.

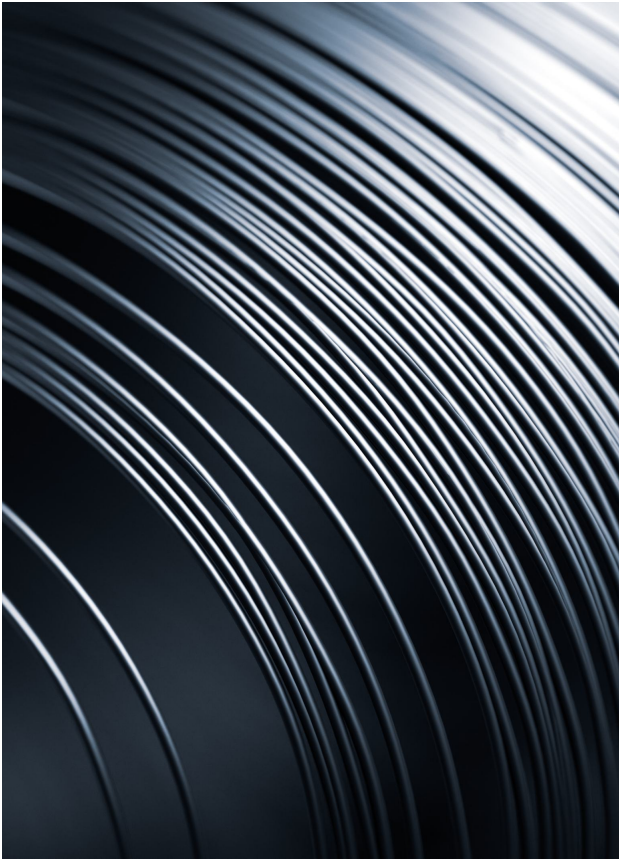
REGNUM PRECISION

# Mission



To enhance customer satisfaction by supplying consistent quality industrial products in an efficient, prompt, and cost-effective manner along with a promise of consistent implementation of changes in its processes as per the constructive feedback received from Regnum Precision Pvt Ltd clients.

REGNUM PRECISION



## Why Us?

Utmost care is given to ensure that our products match the quality norms as per international standards. Right from assuring the solutions; to the sizing of the material to delivery; each and every stage undergoes strict quality checks.

## Business Philosophy

Our business philosophy revolves around supplying premium quality products that exceed our customers' expectations. We are dedicated to meticulous craftsmanship and rigorous quality control measures, ensuring that every steel product we supply is of the highest standard. Our commitment to quality is unwavering, underpinned by cutting-edge technology and a skilled workforce dedicated to precision manufacturing. At Regnum Precision Pvt Ltd, quality isn't just a promise—it's our passion and the cornerstone of our business.

With these solid foundations in place, we are ready for the future. It will continuously strive to be known for its commitment to quality & on-time supplies. It aspires to become a one-stop solution provider for all the industrial raw material requirements. We are confident of delivering this vision, as we believe in offering value to our customers & forging strong relationships with our employees, associates & customers. Our growing list of satisfied customers is testimony to our belief. Welcome to the positive world of Regnum Precision Pvt Ltd

## Regnum Values

- 1 **Safe Ethical Innovative Responsive**
- 2 **Quality**
- 3 **Cost conscious**
- 4 **Drive to deliver**



# Products

Regnum Precision provides a wide range of products .  
Where strength meets style, offering premium steel and  
metal that's built to last.

# Coils

Ideal for applications requiring flexibility and versatility, our metal coils come in various thickness and sizes, perfect for fabrication, manufacturing, and construction projects. There are different types of steel coils, including hot-rolled coils, cold-rolled coils, galvanized coils, and stainless steel coils. Hot-rolled coils are used for construction, shipbuilding, and automotive applications, while cold-rolled coils are used for appliances, furniture, and automotive parts. Stainless steel coils are used for food processing, medical equipment, and other applications requiring high corrosion resistance.

**Type :** HRAP, CRAP, Strip Coils

**Thickness :** 0.30 mm - 100 mm

**Width :** 620 mm - 2000 mm



## MOC

Stainless Steel (202,304,316,409,410,420,430)

Mild Steel (IS 2062, IS1439)

Hastelloy (C22, C276)

Inconel (Alloy600, Alloy625, Alloy800), etc.

Application

- Chemical Industries
- Power Plants
- Heavy Machinery Manufacturing

# Sheets

Our metal sheets provide a flat, smooth surface for a variety of uses, from prototyping to production. They're available in diverse thicknesses, finishes, and dimensions. Stainless steel sheets are commonly used in the food processing, medical, and pharmaceutical industries due to their ability to withstand high temperatures, acidic environments, and frequent cleaning.

**Type :** 2B, BA, No.4 PVC, No.8 PVC, Hairline, Scotch bright, Matte finish

**Thickness :** 0.10 mm - 3 mm

**Sizes :** 1250 mm x 2500/6000mm  
1500 mm x 3000/6000 mm  
2000 mm x 6000 mm  
2500 mm x 6000 mm

The sizes can be customised as per requirement



## MOC

Stainless Steel	(202,304,316,409,410,420,430)
Mild Steel	(IS 2062, IS1439)
Hastelloy	(C22, C276)
Inconel	(Alloy600, Alloy625, Alloy800), etc.
Application	<ul style="list-style-type: none"><li>• Escalators</li><li>• Elevators</li><li>• Food Processing Equipments</li><li>• Pharmaceutical Equipments</li></ul>

# Plates

For heavy-duty applications requiring strength and durability, our metal plates deliver. They're perfect for construction, engineering, and infrastructure projects. Steel plates are also used in the manufacture of boilers, pressure vessels, and other equipment that require high strength and durability.

**Type :** HRAP

**Thickness :** 3 mm - 100 mm

**Sizes :** 1250 mm x 2500/6000mm  
1500 mm x 3000/6000 mm  
2000 mm x 6000 mm  
2500 mm x 6000 mm

The sizes can be customised as per requirement



## MOC

Stainless Steel	(202,304,316,409,410,420,430)
Mild Steel	(IS 2062, IS1439)
Hastelloy	(C22, C276)
Inconel	(Alloy600, Alloy625, Alloy800), etc.
Application	<ul style="list-style-type: none"><li>• Tank Machinery</li><li>• Vessel Machinery</li></ul>

# Round Bars

These bars feature a circular cross-section and are widely used in construction, machining, and manufacturing.

**Range :** DIA 5 mm-500 mm & length 500 mm-6000 mm

**Type :** Round

**Thickness :** 3 mm - 100 mm



## MOC

<b>Stainless Steel</b>	ASTM A479, A182 - 304, 304L, 304H, 316, 316L, 316H, 316Ti, 309, 310, 317L, 321, 347, 904L, 17-4 PH AND 400 SERIES.
<b>Carbon Steel</b>	ASTM A105, A350 LF2.
<b>Titanium</b>	ASTM B348 Grade - 1, 2, 3, 5 (6AL-4V), 7, 9, 11, 12, 23 (6AL-4V ELI)
<b>High Nickel Alloys</b>	Hastelloy, Nickel, Monel, Inconel, Incoloy, Alloy-20
<b>Duplex</b>	ASTM A182 / UNS S31803 & S32205 (2205)
<b>Super Duplex</b>	ASTM A182 / UNS S32750 (2507) & S32760
<b>Alloy Steel</b>	ASTM A182 F5, F9, F11, F12, F21, F22, F91
<b>High Speed Steel HCHCR &amp; OHNS in Grades</b>	M2, M3, MJ5, M42, T1, T4, T15, T42, D2, D3, H11, H13. OHNS-01 & EN-52
<b>Non Ferrous</b>	Copper, Brass, Aluminum, Phosphorous Bronze, Gun Metal, Lead
<b>Finish</b>	Bright, Polish, Black
<b>Hardness</b>	Soft, Hard, Half Hard, Quarter Hard
<b>Test Certificates</b>	MTC, IBR & Third Party Inspection

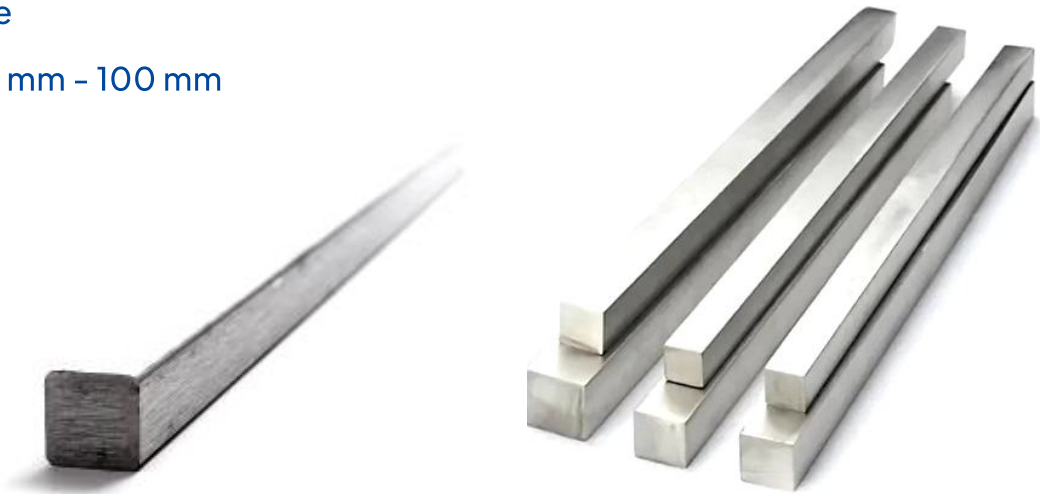
# Square Bars

With a square cross-section, these bars offer stability and are often employed in architectural designs, furniture making, and structural applications

**Range :** DIA 5 mm-500 mm & length 500 mm-6000 mm

**Type :** Square

**Thickness :** 3 mm - 100 mm



## MOC

<b>Stainless Steel</b>	ASTM A479, A182 - 304, 304L, 304H, 316, 316L, 316H, 316Ti, 309, 310, 317L, 321, 347, 904L, 17-4 PH AND 400 SERIES.
<b>Carbon Steel</b>	ASTM A105, A350 LF2.
<b>Titanium</b>	ASTM B348 Grade - 1, 2, 3, 5 (6AL-4V), 7, 9, 11, 12, 23 (6AL-4V ELI)
<b>High Nickel Alloys</b>	Hastelloy, Nickel, Monel, Inconel, Incolony, Alloy-20
<b>Duplex</b>	ASTM A182 / UNS S31803 & S32205 (2205)
<b>Super Duplex</b>	ASTM A182 / UNS S32750 (2507) & S32760
<b>Alloy Steel</b>	ASTM A182 F5, F9, F11, F12, F21, F22, F91
<b>High Speed Steel HCHCR &amp; OHNS in Grades</b>	M2, M3, MJ5, M42, T1, T4, T15, T42, D2, D3, H11, H13. OHNS-01 & EN-52
<b>Non Ferrous</b>	Copper, Brass, Aluminum, Phosphorous Bronze, Gun Metal, Lead
<b>Finish</b>	Bright, Polish, Black
<b>Hardness</b>	Soft, Hard, Half Hard, Quarter Hard
<b>Test Certificates</b>	MTC, IBR & Third Party Inspection



# Hexagonal Bars

Hex bars have six sides, providing excellent strength and suitability for applications requiring precision machining, such as in the automotive and aerospace industries.

**Range :** DIA 5 mm-500 mm & length 500 mm-6000 mm

**Type :** Hexagonal

**Thickness :** 3 mm - 100 mm



## MOC

### Stainless Steel

ASTM A479, A182 - 304, 304L, 304H, 316, 316L, 316H, 316Ti, 309, 310, 317L, 321, 347, 904L, 17-4 PH AND 400 SERIES.

### Carbon Steel

ASTM A105, A350 LF2.

### Titanium

ASTM B348 Grade - 1, 2, 3, 5 (6AL-4V), 7, 9, 11, 12, 23 (6AL-4V ELI)

### High Nickel Alloys

Hastelloy, Nickel, Monel, Inconel, Incolony, Alloy-20

### Duplex

ASTM A182 / UNS S31803 & S32205 (2205)

### Super Duplex

ASTM A182 / UNS S32750 (2507) & S32760

### Alloy Steel

ASTM A182 F5, F9, F11, F12, F21, F22, F91

### High Speed Steel HCHCR & OHNS in Grades

M2, M3, MJ5, M42, T1, T4, T15, T42, D2, D3, H11, H13.  
OHNS-01 & EN-52

### Non Ferrous

Copper, Brass, Aluminum, Phosphorous Bronze,  
Gun Metal, Lead

### Finish

Bright, Polish, Black

### Hardness

Soft, Hard, Half Hard, Quarter Hard

### Test Certificates

MTC, IBR & Third Party Inspection

# Flat Bars

Characterized by their flat, rectangular shape, these bars are versatile and commonly used in construction, manufacturing, and fabrication projects.

**Range :** DIA 5 mm-500 mm & length 500 mm-6000 mm

**Type :** Flat

**Thickness :** 3 mm - 100 mm



## MOC

<b>Stainless Steel</b>	ASTM A479, A182 - 304, 304L, 304H, 316, 316L, 316H, 316Ti, 309, 310, 317L, 321, 347, 904L, 17-4 PH AND 400 SERIES.
<b>Carbon Steel</b>	ASTM A105, A350 LF2.
<b>Titanium</b>	ASTM B348 Grade - 1, 2, 3, 5 (6AL-4V), 7, 9, 11, 12, 23 (6AL-4V ELI)
<b>High Nickel Alloys</b>	Hastelloy, Nickel, Monel, Inconel, Incolony, Alloy-20
<b>Duplex</b>	ASTM A182 / UNS S31803 & S32205 (2205)
<b>Super Duplex</b>	ASTM A182 / UNS S32750 (2507) & S32760
<b>Alloy Steel</b>	ASTM A182 F5, F9, F11, F12, F21, F22, F91
<b>High Speed Steel HCHCR &amp; OHNS in Grades</b>	M2, M3, MJ5, M42, T1, T4, T15, T42, D2, D3, H11, H13. OHNS-01 & EN-52
<b>Non Ferrous</b>	Copper, Brass, Aluminum, Phosphorous Bronze, Gun Metal, Lead
<b>Finish</b>	Bright, Polish, Black
<b>Hardness</b>	Soft, Hard, Half Hard, Quarter Hard
<b>Test Certificates</b>	MTC, IBR & Third Party Inspection

# Beams

Regnum precision Pvt Ltd supplies quality beams to its customers. Beams are horizontal or vertical structural elements used in building construction, made from stainless steel, mild steel or alloy steel. They provide support and stability to buildings, bridges, and other structures. Here are some key things to know about steel beams

**Materials :** Steel beams are made from different types of steel, such as carbon steel, stainless steel, and alloy steel

**Type :** I-Beams, H-Beams, Wide Flange Beams, and Tubular Beams

**Sizes :** 25 x 25 - 350 x 350 with 6000 mm length.



## MOC

Stainless Steel (202,304,316,409,410,420,430),

Mild Steel (IS 2062, IS1439)

Application

- Steel beams are used in building frames
- Roof construction,
- Bridge building
- Industrial machinery.

These simple yet powerful components are the building blocks of many modern structures, from bridges to skyscrapers.

# Angles

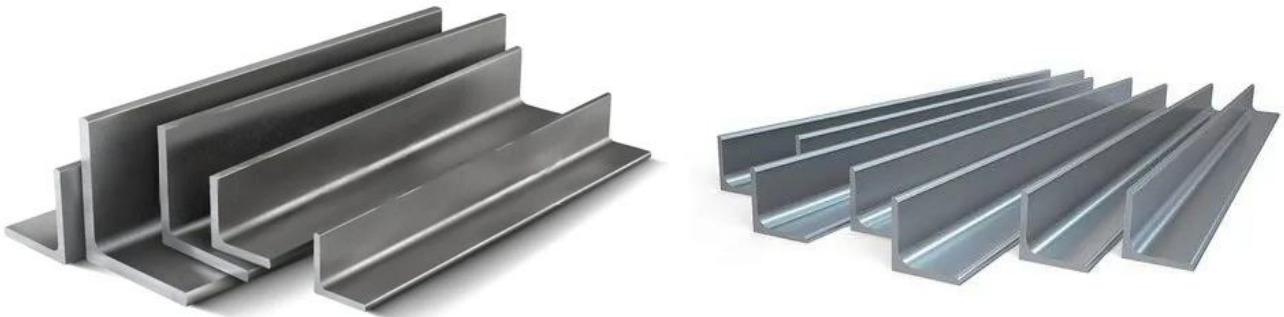
Regnum precision Pvt Ltd manufactures and supplies quality Angle. The Shape of an angle is L-shaped, with two legs of equal or unequal lengths. Structural Angles are used in construction, fabrication, and manufacturing applications, including building frames, bridges, machinery, and equipment.

**Materials :** Made from stainless steel grades like 304, 316, and 410.

**Thickness :** Ranges From 1/8" -1" (3 Mm To 25 Mm).

**Sizes :** 1/2" -12" (13 mm to 305 mm).

**Finish :** Mill finish, Polished finish, or Bead Blast finish.



## MOC

Stainless Steel (202,304,316,409,410,420,430),

Mild Steel (IS 2062, IS1439)

Application

- Used in construction
- Marine hardware
- Food processing
- Pharmaceutical equipment due to their corrosion resistance and durability.

These simple yet powerful components are the building blocks of many modern structures, from bridges to skyscrapers.

# Channels

Regnum precision Pvt Ltd brings to you a wide range of Channel, also known as channel bar or C-channel, is a type of metal structural element. The shape of a channel is C-shaped or U-shaped, with two parallel flanges connected by a web.

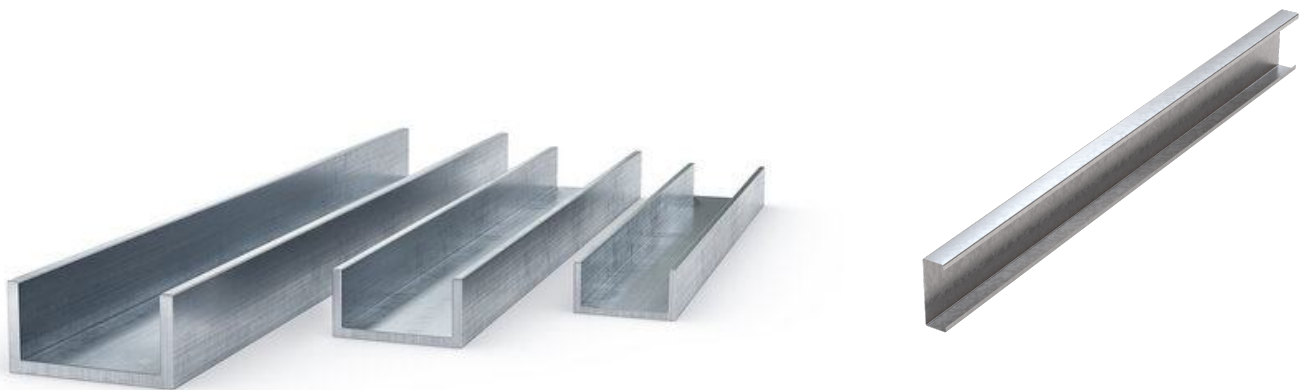
**Materials :** Made from various metals, including steel (mild, stainless, and galvanized), Aluminum, and Brass.

**Thickness :** Ranges From 1/8" - 1" (3 Mm To 25 Mm).

**Sizes :** Ranging from 1"-12 (25 mm to 305 mm) in depth.

**Types :** Standard channel (C-shaped) and miscellaneous channel (MC shape).

**Uses :** Provide support, stability, and strength to structures and frameworks, especially in building frames, roof construction, and bridge building.



## MOC

Stainless Steel (202,304,316,409,410,420,430),

Mild Steel (IS 2062, IS1439)

Application

- Used in construction
- Framing
- Brackets
- Supports
- Machine Building

These simple yet powerful components are the building blocks of many modern structures, from bridges to skyscrapers.

# Tubes

Regnum precision Pvt Ltd manufactures a wide range of tubes, made in compliance with international quality and safety standards. We offer tubes at highly quality tubes with competitive prices and deliver consignment within stipulated time. Our range comprises of Welded/ Seamless tubes. Available in different dimensions & grades, these tubes are widely used in different industries like oil & Gas, power, engineering, construction and many more.

**Materials :** Stainless Steel (SS)/Duplex Steel (DS)/Nickel Based Alloy Steel (NS) etc.

**Thickness :** Ranges From 1/8" - 1" (3 Mm To 25 Mm).

**Testing STD :** ASTM (A213, A269, A312, A358, B165, B163, 3829, B730, B751)

**Types :** Seamless/ERW SIZE: 1/8"OD-2"OD

**Form :** Coil Form & Straight Form

**Working Pressure:** Upto 9000 PSI



## MOC

Stainless Steel (202,304,316,409,410,420,430)

Duplex /Super Duplex (DSS) (S32750, S32760)

Nickel Based Alloy Steel (NS) (C276 ,UNS N06625, INCONEL 625)

## Application

- Industrial Application
- Transportation of liquids and gases
- Used in conveyor belts
- Used in hydraulic lifts, mill machinery

# Pipes

Regnum precision Pvt Ltd manufactures a wide range of pipes, made in compliance with international quality and safety standards. Our range comprises of Welded/ Seamless pipes. Available in different dimensions & grades, these pipes are widely used in different industries like oil & Gas, power, engineering, construction and many more.

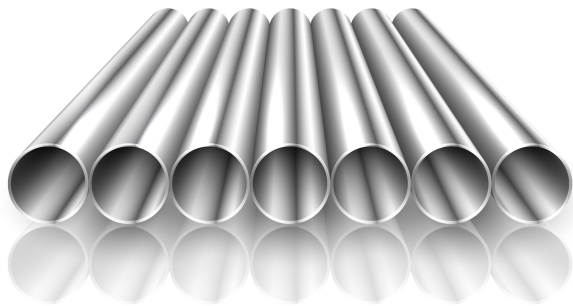
**Materials :** Carbon Steel(CS), Alloy Steel(AS), Stainless Steel (SS). Duplex Steel (DS). Nickel Based Alloy Steel (NS) etc.

**Testing STD :** ASTM(A106 Gr.B, A312, A358, B165, B163, B829, B730, B751)

**Types :** Seamless/ERW/EFW

**Form :** Round, Square, Rectangle, Oval.

**Working Pressure:** Upto 9000 PSI



## MOC

Stainless Steel (202,304,316,409,410,420,430)

Duplex /Super Duplex (DSS) (S32750, S32760)

Nickel Based Alloy Steel (NS) (C276 ,UNS N06625, INCONEL 625)

Application

- Industrial Application
- Transportation of liquids and gases
- Agricultural Industry
- Construction of bridges and buildings

# Forged-Fittings

Regnum Precision Pvt Ltd manufacture in house forging of flanges as forged fitting which is designed to connect section of pipe or Joint Pipe to Pressure Vessel, Valve, Pump or any other integral Flange assembly. Regnum manufactures comprehensive range of High Pressure forged Pipe Fittings for Process Control, Instrumentation, Hydraulic & Pneumatic application which meet general & critical needs of Oil & Gas Petrochemical, Chemical, Fertilizer, Steel Plant, Offshore & Power Generating Industries.

**Materials :** Carbon Steel(CS), Alloy Steel(AS), Stainless Steel (SS). Duplex Steel (DS). Nickel Based Alloy Steel (NS) etc.

**Testing STD :** ASTM(A106 Gr.B, A312, A358, B165, B163, B829, B730, B751)

**Types :** Seamless/ERW/EFW

**Form :** Round, Square, Rectangle, Oval.

**Working Pressure:** Upto 9000 PSI



## MOC

Stainless Steel (202,304,316,409,410,420,430)

Duplex /Super Duplex (DSS) (S32750, S32760)

Nickel Based Alloy Steel (NS) (C276 ,UNS N06625, INCONEL 625)

## Application

- Connects two lengths of pipe
- Creates angles in a piping system
- Carrying water and flammable gases
- Fire sprinkler systems

# Flanges

Regnum precision Pvt Ltd manufactures in house forging of flanges which is Designed to connect section of Pipe or joint Pipe to Pressure Vessel, Valve, Pump or any other integral Flange assembly Regnum manufactures comprehensive range of High Pressure forged Pipe Fittings for Process Control, Instrumentation Hydraulic & Pneumatic application which meet general & critical needs of Oil & Gas Petrochemical, Chemical Fertilizer, Steel Plant, Offshore & Power Generating Industries.

**Materials :** Carbon Steel(CS), Alloy Steel(AS), Stainless Steel (SS). Duplex Steel (DS). Nickel Based Alloy Steel (NS) etc.

**Testing STD :** ASTM B16.11, MSS SP 79/75/97/95

**Types :** Weldneck/ Blind/ Slipon / High Hub Socket Weld/Flat Face/Threaded/Ring Type Joint Groove & Tongue/Expander

**Size :** 1/2"-24"

**End Connection :** Socket weld/NPT/BSP/Butt weld.



## MOC

Stainless Steel	(202,304,316,409,410,420,430)
Duplex /Super Duplex (DSS)	(S32750, S32760)
Nickel Based Alloy Steel (NS)	(C276 ,UNS N06625, INCONEL 625)

Application	<ul style="list-style-type: none"><li>• Heavy duty industrial application</li><li>• Power Plants</li><li>• Oil Refinery</li><li>• Construction of pipelines</li></ul>
-------------	---



# Instrumentation Valves

Regnum precision Pvt Ltd compact instrumentation Valves provide shut-off and coarse regulation of liquids and gas utilized in process and instrumentation application. It use in Industries such as Oil & Gas, Petrochemical Pharma etc. These rugged valves are manufactured from die forged & forged bar stock as per industrial design standard with modular packing suitable for process requirement.

**Materials :** Stainless Steel (SS)/Duplex Steel (DS)/Nickel Based Alloy Steel (NS) etc.

**Testing STD :** Ball Valve AP 1598/EN 12266, Needle Valve-MSSSP99

**Types :** Needle Valve/Ball Valve/Bleed Valve

**Size :** 1/8"-2"

**End Connection :** Socket, Threaded (NPT&BSP) etc.

**Working Pressure :** Ball valve-upto 2000 PSI, Needle valve - upto 9000 PSI



## MOC

Stainless Steel

(202,304,316,409,410,420,430)

Duplex /Super Duplex  
(DSS)

(S32750, S32760)

Nickel Based Alloy Steel  
(NS)

(C276 ,UNS N06625, INCONEL 625)

Application

- Industrial Application
- Transportation of liquids and gases
- Used in conveyor belts
- Used in hydraulic lifts, mill machinery



# Line Card





**REGNUM PRECISION PVT LTD**

**901, 9th floor, Ratan Luxuria building, Jehangir  
Daaji street, Grant road, Mumbai - 400007**

[www.regnumprecision.com](http://www.regnumprecision.com)  
[aaryan@regnumprecision.com](mailto:aaryan@regnumprecision.com)  
+91 8169209425